



Coordination Des Produits

Carpet Tile: **Stone Comfortworx® Tile, Fragment Comfortworx® Tile, Formation Colours Comfortworx® Tile, Fragment Colours Comfortworx® Tile, Stone Colours Comfortworx® Tile, Formation Comfortworx® Tile, Fragment Taskworx® Tile, Stone Taskworx® Tile, Fragment Colours Ecoworx S Tile, Formation Colours Taskworx® Tile, Fragment Colours Taskworx® Tile, Fragment Ecoworx S Tile, Stone Ecoworx S Tile, Formation Taskworx® Tile, Formation Ecoworx S Tile, Stone Colours Taskworx® Tile, Stone Colours Ecoworx® S Tile**

Attributs + Certifications

Certifications Below Apply Exclusively To The Carpet Tile Rug Itself And Not The Lokworx Tabs Adhesive

Declaration of Performance	<b>EU.DOP/2895/CPR/1222/0323/EST</b>
Certification Cradle to Cradle™ (C2C)	<b>Silver Level (Version 3.1)</b>
Déclaration environnementale de produit (EPD)	<b>Certifié Par Un Organisme Tiers Conformément Aux Normes ISO14044, ISO 14025 &amp; EN15804</b>
Embodied Carbon (Cradle to Gate)	<b>4.21 kg CO<sub>2</sub>/m<sup>2</sup></b>
Life-Cycle Carbon Emissions	<b>Carbon Neutral</b>
garantie environnementale	<b>Take Back Policy Offered For All Ecoworx S™ Products</b>
pays d'origine	<b>United Kingdom</b>
BREEAM Contribution Credit	<b>Certificate of Approval Schools/Offices/Health/Industrial Shed Retail</b>

Well V2 Contribution Credit

X08 Hazardous Material Reduction Part 1: Limit Hazardous Materials Optimization	<b>C2C Silver Level (Version 3.1)</b>
X10 Volatile Compound Reduction Part 1 (A): Manage Volatile Organic Compounds (VOCs) Optimization	<b>C2C Silver Level (Version 3.1)</b>
X11 Long Term Emissions Control Part 2: Flooring Optimization	<b>M1&gt; Emissions Class For Building Material</b>
X13 Enhanced Material Precaution Part 1: Select Optimized Materials Optimization	<b>C2C Silver Level (Version 3.1)</b>
X14 Material Transparency Part 1: Promote Ingredient Disclosure Optimization	<b>C2C Silver Level (Version 3.1)</b>

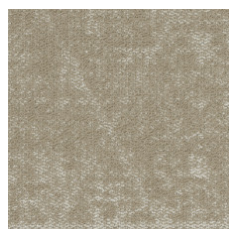
Contribution À La Certification Leed

MR Credit: Building Product Disclosure and Optimisation Material Ingredients - Option 1: Material Ingredient Reporting	<b>C2C Silver Level (Version 3.1)</b>
MR Credit: Building Product Disclosure and Optimisation Material Ingredients - Option 2: Material Ingredient Optimization	<b>C2C Silver Level (Version 3.1)</b>
"Crédit EQ : matériaux faibles émissions Option 1 : calculs par catégorie de produit"	<b>Certified</b>

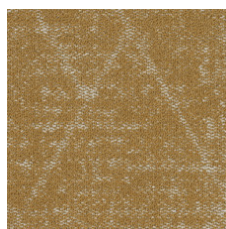
Memberships

WGBC Framework	<b>WGBC Framework</b>
UKGBC	<b>UKGBC</b>
Emirates Green Building Council	<b>Emirates Green Building Council</b>
Chemsec	<b>Chemsec</b>

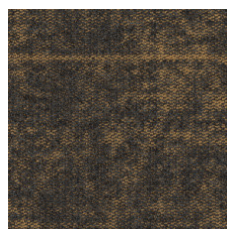
### Indice De Réfexion Lumineuse



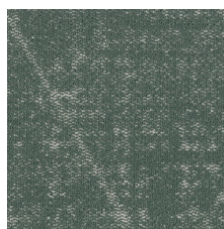
Oatmeal 04111  
LRV 26.9



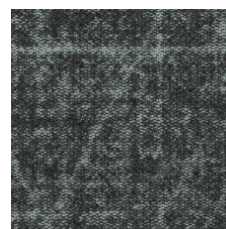
Brushed Gold 04210  
LRV 20.8



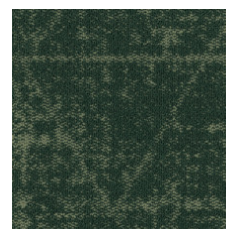
Midnight Brushed Gold  
04211  
LRV 7



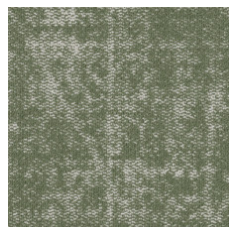
Mineral 04327  
LRV 18.5



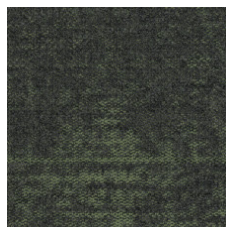
Midnight Mineral 04328  
LRV 10.7



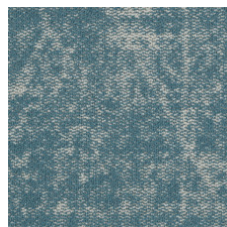
Racing Green 04334  
LRV 5.5



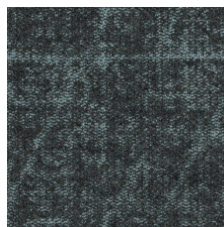
Sage 04375  
LRV 17.4



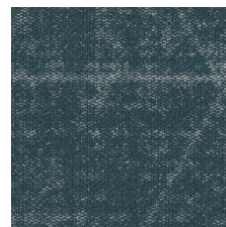
Midnight Sage 04376  
LRV 6.3



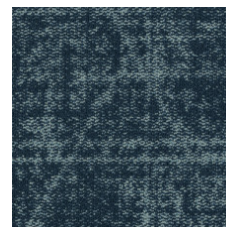
Sky 04411  
LRV 18.8



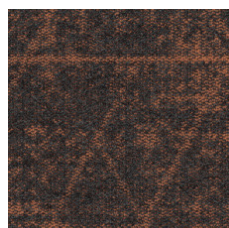
Midnight Sky 04412  
LRV 6.5



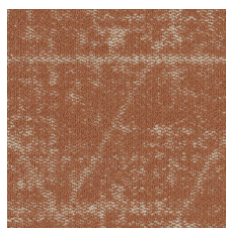
Steel Blue 04447  
LRV 12



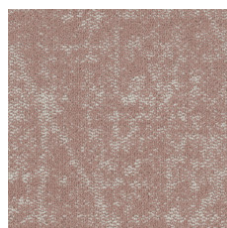
Denim 04486  
LRV 4.8



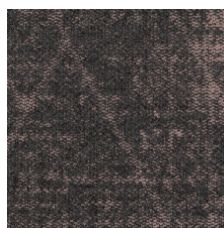
Midnight Apricot 04674  
LRV 6.3



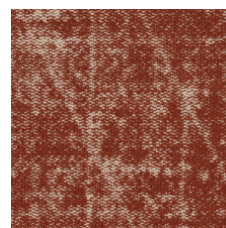
Apricot 04675  
LRV 20.2



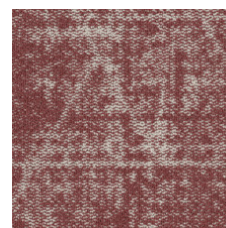
Powder Pink 04800  
LRV 25.5



Midnight Powder Pink  
04801  
LRV 7.1



Copper 04865  
LRV 9.8



Rosewood 04870  
LRV 12.6

### Informations Supplémentaires

\*\*Manufactured in ISO 9001 certified facility. Meets or exceeds all local and national regulations in country of manufacture.

Installation Guidelines

Maintenance Guidelines

lifetime commercial limited

Specifications are subject to nominal manufacturing variance. Material supply and/or manufacturing processes may necessitate changes without notice.

This product is an exclusive design and may not be duplicated in any manner. Use of this design in the creation of another product design is also strictly prohibited.

Visit [shawcontract.com/testing](https://shawcontract.com/testing) for more information.



Corporate Headquarters +1 800 257 7429 | +1 706 532 7984 | Atlanta +1 404 853 7429 | Bengaluru +91 80 6773 0202 | Beijing +86 10 6568 588 | Chicago +1 312 467 1331 | Dubai +971 4 584 6956 | Hong Kong +852 2623 0371 | Latin America (Miami) +1 305 827 5912 | London +44 207 961 4120 | Los Angeles +1 800 233 1614 | Melbourne +61 3 9939 8543 | Mexico City +55 5010 7600 | Mumbai +91 22 6284 5050 | Nantong +86 400 800 7429 | New York +1 212 953 7429 | Paris +33 (0) 1 81 22 44 39 | San Francisco +1 415 955 1920 | Santiago +562 2431 5000 x 550 | São Paulo +55 11 3071 1702 | Shanghai +86 21 3338 4000 | Singapore +65 6733 1811 | Sydney +1 800 556 302

© 2024 Shaw Industries Group, Inc., a Berkshire Hathaway Company  
May 20, 2024

3 of 3